

REVISIONS		
NO.	DESCRIPTION	DATE

**PRELIMINARY PLAN
NOT FOR CONSTRUCTION**
THESE PLANS ARE NOT FULLY PERMITTED
AND ARE SUBJECT TO REVISIONS MADE
DURING THE PERMITTING PROCESS.
RESPONSIBILITY FOR THE USE OF THESE
PLANS PRIOR TO OBTAINING PERMITS FROM
ALL AGENCIES HAVING JURISDICTION OVER
THE PROJECT WILL FALL SOLELY UPON THE
USER.

ISSUE DATE: 11/12/2025
DESIGNED BY: KU, KS
DRAWN BY: KU
CHECKED BY: KU, KS
BID-CONTRACT:

PAUL H. WEINBERG, R.L.A.
FLORIDA REG. NO. LA6666804
(FOR THE FIRM)

CLIENT

JADIAN IOS

PROJECT

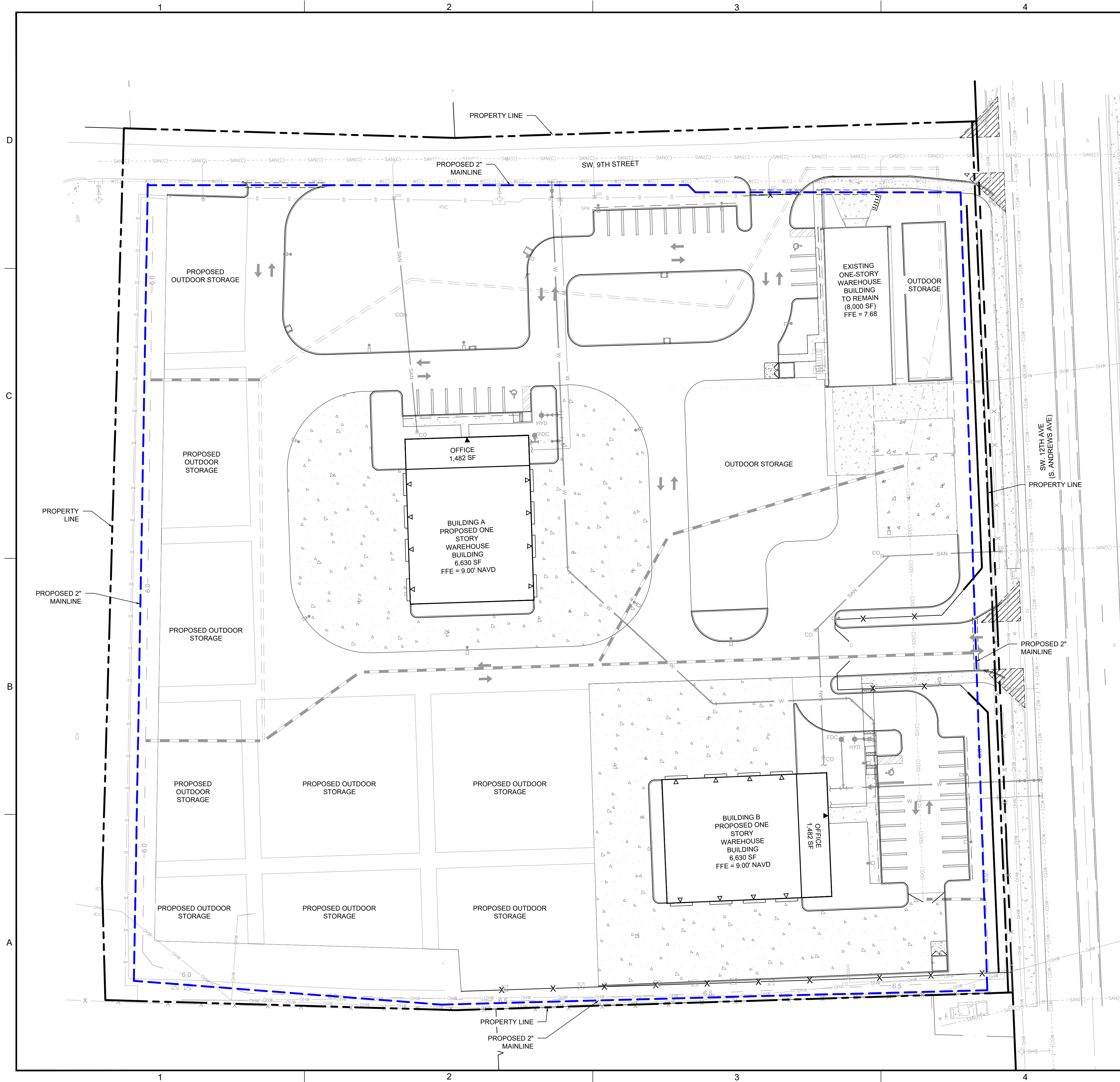
**951 SW 12th AVENUE
POMPAÑO BEACH FL**

SHEET TITLE

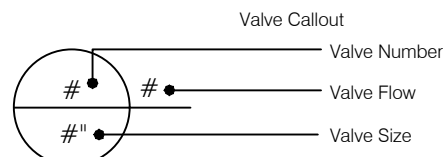
IRRIGATION PLAN

SHEET NUMBER LI-101
PROJECT NUMBER 15427.00

STATUS: PRELIMINARY



IRRIGATION SCHEDULE		
SYMBOL	MANUFACTURER/MODEL/DESCRIPTION	PSI
	RAIN BIRD 1806-PRS 15 STRIP SERIES SHRUB SPRAY 6IN. POP-UP SPRINKLER WITH CO-MOLDED WIPER SEAL. SIDE AND BOTTOM INLET. 1/2IN. NPT FEMALE THREADED INLET. WITH PRESSURE REGULATING DEVICE.	30
	RAIN BIRD 1806-PRS 8 SERIES MPR SHRUB SPRAY 6IN. POP-UP SPRINKLER WITH CO-MOLDED WIPER SEAL. SIDE AND BOTTOM INLET. 1/2IN. NPT FEMALE THREADED INLET. WITH PRESSURE REGULATING DEVICE.	30
	RAIN BIRD 1806-PRS 10 SERIES MPR SHRUB SPRAY 6IN. POP-UP SPRINKLER WITH CO-MOLDED WIPER SEAL. SIDE AND BOTTOM INLET. 1/2IN. NPT FEMALE THREADED INLET. WITH PRESSURE REGULATING DEVICE.	30
	RAIN BIRD 1806-PRS 12 SERIES MPR SHRUB SPRAY 6IN. POP-UP SPRINKLER WITH CO-MOLDED WIPER SEAL. SIDE AND BOTTOM INLET. 1/2IN. NPT FEMALE THREADED INLET. WITH PRESSURE REGULATING DEVICE.	30
	RAIN BIRD 1806-PRS 15 SERIES MPR SHRUB SPRAY 6IN. POP-UP SPRINKLER WITH CO-MOLDED WIPER SEAL. SIDE AND BOTTOM INLET. 1/2IN. NPT FEMALE THREADED INLET. WITH PRESSURE REGULATING DEVICE.	30
SYMBOL	MANUFACTURER/MODEL/DESCRIPTION	
	RAIN BIRD PEB 1IN., 1-1/2IN., 2IN., 3IN. PLASTIC INDUSTRIAL REMOTE CONTROL VALVE. LOW FLOW OPERATING CAPABILITY, GLOBE CONFIGURATION.	
	IRRIGATION LATERAL LINE: PVC CLASS 160 SDR 26 SYSTEM PIPE SIZE 3/4" SHALL BE CLASS 200 PVC; SYSTEM PIPE SIZE 1" OR GREATER SHALL BE CLASS 160 PVC.	
	IRRIGATION MAINLINE: PVC SCHEDULE 40	
	PIPE SLEEVE: PVC SCHEDULE 40	



- NOTES:**
- ALL SOD AND LANDSCAPE TO RECEIVE 100% COVERAGE WITH 100% OVERLAP FROM AN AUTOMATIC IRRIGATION SYSTEM USING AN APPROVED WATER SOURCE.
 - A RAIN SENSOR MUST BE INSTALLED TO OVER-RIDE THE CONTROLLER.
 - BUBBLERS TO BE PROVIDED FOR NEW AND RELOCATED TREES AND PALMS.
 - CONTRACTOR IS RESPONSIBLE FOR ALL CONDITIONS AND IRRIGATION SPECIFICATION ATTACHED TO THIS PLAN. PLAN AND SPECIFICATIONS SHALL BE CONSIDERED CONTRACT DOCUMENTS.
 - INVESTIGATE TO DETERMINE AND VERIFY THE LOCATION OF UNDERGROUND UTILITIES BEFORE EXCAVATION.
 - REFER TO SHEET LI-501 FOR ADDITIONAL IRRIGATION SPECIFICATIONS AND DETAILS.
 - NOZZLE SELECTION BASED ON COVERAGE REQUIREMENTS.

